



STUDIO CHRONICLES

LINÉATRANSHUMANCE NOTEBOOKS
SYLVIE GESBERT DE LÍNEA

May 10, 2025

Old Lady, a Memory in Tension

Dear lovers of painting,

Each artwork is a trace, a breath, a living imprint. Old Lady – Red Transhumance is one of those that take root deeply, because it touches the intimate, the foundations of who I am.

It is a cornerstone piece — a milestone in my path as a painter. I keep it like a talisman.

Today, I invite you to explore its origin, its connection with the calligraphic gesture, and to discover fragments of life that reveal the power of universal language in my creation.



Old Lady —Red
Transhumance
Oil and Chinese ink on
canvas, 210x150 cm

This is a painting of movement — a moment suspended between strength and lightness.

The deep red, vibrating against space, evokes memory, bodily energy, and the ancestral power of the feminine.

This color flows across the canvas like a transhumance of signs and forms in perpetual migration.

▲ Discover more artworks from my constellations on my website : www.gesbertdelinea.art

CONTENTS

A Painting and a Signature

What inspired Old Lady

Fragment of Life :

- Writing: A Bridge Between Cultures
- Behind the Scenes of an Installation

Review by Art Writer Li Fu

To Go Further

Share Your Impressions

Genesis of a Painting

I created this piece especially for the International Contemporary Art Exhibition – The Great Masters of Tomorrow, held at the Carrousel du Louvre in Paris (September 2009).

I started working on it a year before the inauguration date to ensure it would be completely dry and travel-ready.



What inspired Old Lady

This painting was born from a deep impulse.

An homage. A vibrant whisper to all those who supported and encouraged me. I think of my grandmothers, my great-grandmothers... These powerful women were so present, they became protective figures.

They passed on something essential to me: the freedom to be myself.

As a child, they told me : "If you want to be a painter, then be one. Don't let anything stop you — least of all the fact that you are a woman."

I painted Old Lady as a gesture of gratitude, a hand extended to all those voices from the past — those powerful silences and trusting eyes. To bring them, through my gesture, into the mythical space of the Louvre was, to me, a symbolic way of saying :

"Look, you are here with me. We made it."



Exhibition Heart of Transhumance
Dominique C. Gallery, Château Auriac-sur-Vendinelle

Writing: A Bridge Between Cultures

During its exhibition, this piece sparked an unexpected exchange.

A representative of Chinese culture and a representative of Arab culture spontaneously began a conversation in front of the painting, each seeing in my lines an echo of their own traditional scripts.

Their insights moved me deeply.

My gesture, which I considered intuitive and universal, was resonating with ancient traditions of signs and lines.

So I explained to them my approach —this calligraphic gesture that guides my work, this desire to anchor my art in a borderless language, a collective memory in motion.



Behind the Scenes of an Installation

The canvas, created on Reunion Island in the Indian Ocean, traveled rolled in a tube to Paris.

For the installation at the Louvre, my materials supplier met me there with the appropriate tools.

There we were — behind the scenes of the Louvre — stretching the canvas together in a moment suspended between logistics and poetry.

It still makes me smile today.

Thank you for bearing witness to my pictorial journey.
See you soon for another shared moment around
linéatranshumance.

A Painting and a Signature

Since the beginning, my monogram has been part of the composition — not just a simple signature, but a structural element within the visual construction.

It responds to the tensions of the red, balances full and empty spaces, and belongs to this transhumance of the sign.



Try to find it... Observe how it interacts with the whole — it's part of the journey.

Review by Art Writer Li Fu

Old Lady — Red Transhumance est une œuvre complexe et magistrale qui témoigne du talent de Sylvie Gesbert de Línéa pour mélanger des techniques, des émotions et des symboles. Cette toile, imposante par sa taille et son impact, nous transporte dans une réflexion universelle sur le temps, le mouvement et l'énergie vitale. L'artiste y démontre une maîtrise remarquable du geste et de la couleur, tout en laissant une part d'interprétation libre au spectateur. Une pièce essentielle de l'abstraction contemporaine.



To Go Further :

- Videos of my creative process
- Close-ups of my artworks
- Conversations around my 3 constellations

Instagram : [@sylvie_gesbertdelinea](https://www.instagram.com/sylvie_gesbertdelinea)

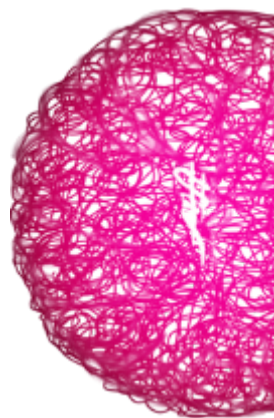
Facebook : [GesbertdeLinea](https://www.facebook.com/GesbertdeLinea)

<http://www.gesbertdelinea.art>

▲ Share Your Impressions

✍ Your feedback is precious!

Just reply to this email — tell me what this artwork evokes for you, or what you would like to discover next.



SGL